

Awareness of Memory Ability and Change: (In)Accuracy of Memory Self-Assessments in Relation to Performance

Elizabeth Hahn Rickenbach · Stefan Agrigoroaei ·
Margie E. Lachman

Received: 2 July 2014 / Accepted: 22 December 2014 / Published online: 6 February 2015
© Springer Science+Business Media Dordrecht 2014

Abstract Little is known about subjective assessments of memory abilities and decline among middle-aged adults or their association with objective memory performance in the general population. In this study we examined self-ratings of memory ability and change in relation to episodic memory performance in two national samples of middle-aged and older adults from the Midlife in the United States study (MIDUS II in 2005–06) and the Health and Retirement Study (HRS; every 2 years from 2002 to 2012). MIDUS (Study 1) participants ($N=3581$) rated their memory compared to others their age and to themselves 5 years ago; HRS (Study 2) participants ($N=14,821$) rated their current memory and their memory compared to 2 years ago, with up to six occasions of longitudinal data over 10 years. In both studies, episodic memory performance was the total number of words recalled in immediate and delayed conditions. When controlling for demographic and health correlates, self-ratings of memory abilities, but not subjective change, were related to performance. We examined accuracy by comparing subjective and objective memory ability and change. More than one third of the participants across the studies had self-assessments that were inaccurate relative to their actual level of performance and change, and accuracy differed as a function of demographic and health factors. Further understanding of self-awareness of memory abilities and change beginning in midlife may be useful for identifying early warning signs of decline, with implications regarding policies and practice for early detection and treatment of cognitive impairment.

E. H. Rickenbach
Department of Psychology, Saint Anselm College, Manchester, NH, USA

S. Agrigoroaei
Psychological Sciences Research Institute, Université catholique de Louvain, Louvain-la-Neuve, Belgium

M. E. Lachman (✉)
Department of Psychology, Brandeis University, 415 South Street MS 062, Waltham, MA 02453, USA
e-mail: lachman@brandeis.edu

Keywords Subjective memory ability · Subjective memory change · Memory self-ratings · Episodic memory · Memory concerns · Memory complaints · Accuracy of self-assessments

Introduction

Concerns about memory loss and subjective memory complaints seem ubiquitous in the daily lives of middle-aged and older adults (Lachman 2004), yet surprisingly little is known about how adults in the general population rate their memory ability compared to others their own age or to their own memory at earlier points in time. Moreover, there is a limited understanding of how self-assessments of memory correspond to actual memory performance or change over time. Given the widespread publicity about dementia and the expected increase to over 7.1 million older adults with Alzheimer's disease in the United States by the year 2025 (Alzheimer's Association 2014), many adults may be worried about their memory, whether or not they are experiencing problems. Although there is evidence for significant objective declines in memory starting in midlife, there are wide individual differences in the amount and rate of change (Agrigoroaei and Lachman 2011; Albert et al. 1995; Salthouse 2009; Singh-Manoux et al. 2012; Small et al. 2011). A key consideration with implications for public health is to determine the extent to which adults are aware of their own memory abilities and changes therein throughout the adult years.

The evidence, based largely on small studies with non-representative samples of adults over age 60, suggests that self-ratings of memory are either unrelated or moderately related to actual memory performance (Beaudoin and Desrichard 2011; Crumley et al. 2014). Results of two meta-analyses examining self-assessments and actual performance showed a small relationship, $r=0.15$ (Beaudoin and Desrichard 2011) and $r=0.06$ (Crumley et al. 2014). The association of subjective and objective indicators of memory varies to some extent depending on factors such as the assessment method and nature of the sample. The goal of the present study was to characterize global memory self-assessments of ability and perceived change in two national samples of middle-aged and older adults. General self-assessments of memory abilities and perceived change were examined in relation to episodic memory, adjusting for key demographic and health factors. The current study extends previous work by also considering the relationship of subjective assessments and objective performance as an indicator of accuracy. Although there is increasing evidence that subjective cognitive decline may be an early indicator of Alzheimer's disease, even without evidence for problems in objective performance (Jessen et al. 2014), this has been primarily investigated among older adults. We were interested in exploring the role of subjective memory with a wider age range, including middle-aged adults. Knowledge about the relationship between subjective and objective memory can be informative at earlier ages than typically studied for early detection efforts.

Accuracy about performance, a central component of self-efficacy theory (Bandura 1982), refers to ratings of confidence in one's abilities and the degree to which one over or underestimates their abilities. Inaccurate self-assessments in a given domain have consequences for behaviors and actions (Bandura 1982), such as avoiding activities or over-extending oneself. Past research has examined accuracy or knowledge about

memory and cognition, also referred to as metacognition, in terms of specific task performance primarily within lab-based settings and often with undergraduate students (Hertzog and Dunlosky 2011; Kruger and Dunning 1999). Results have shown that inaccuracy, i.e. overestimating performance, is common especially among individuals with low cognitive abilities (Kruger and Dunning 1999). Our research used a broader approach to examine accuracy in terms of under and overestimation of memory performance and change using general self-assessments of memory in a national sample across the adult lifespan.

Demographic and Health Predictors of Memory Self-Ratings and Performance

Research has shown that memory and self-assessments of memory have similar correlates, including age, education, sex, and physical and mental health. Previous work has tied memory self-assessments less to actual performance and more strongly to neuroticism, negative affect (Seidenberg et al. 1994), and depression (Grut et al. 1993; Merema et al. 2012). Subjective memory complaints have also been associated with multimorbidity, psychological distress (Aarts et al. 2011) and a lower quality of life (Mol et al. 2007, 2009; Waldorff et al. 2008).

Self-reported changes in cognitive performance are part of the National Institute on Aging-Alzheimer's Association criteria for pre-dementia states (Albert et al. 2011) and may be among the first signs of AD (Jessen et al. 2014). In clinical samples, self-reports of cognition and memory are related to greater risk of cognitive impairment and dementia (Jonker et al. 1997; Kryscio et al. 2014; Mitchell et al. 2014; van Oijen et al. 2007) and neuropathology characteristic of dementia (Dubois et al. 2007), specifically amyloid deposition (Amariglio et al. 2012). Therefore, self-reports of current memory ability and subjective memory change may serve as an indicator of initial stages of cognitive impairment, and could motivate a memory clinic visit for a mental status evaluation. Collectively, this suggests there are public health implications of gaining a better understanding of factors associated with self-ratings of memory in the general population and understanding the degree of self-awareness of memory across the adult lifespan.

Memory performance has been studied more extensively than subjective assessments in population-based samples. Specifically, previous work with the Midlife in the United States study (MIDUS) has shown (Lachman et al. 2014) there are age, gender, and education differences in cognition. A subsample of MIDUS participants from the Greater Boston area were examined longitudinally and this work showed that protective factors, such as control beliefs, social support, and physical exercise, were beneficial for maintaining cognitive functioning over time (Agrigoroaei and Lachman 2011). Two studies with MIDUS examined self-ratings of memory in relation to self-reports of physical activity, cognitive activities (e.g., reading books), and self-ratings of health (Lee 2014; Lee et al. 2013), but not in relation to actual performance.

A number of studies have looked at cognitive data in the nationally-representative HRS, and most of these studies (Crimmins et al. 2011; Herzog and Wallace 1997; Karlamangla et al. 2009; Ofstedal et al. 1999; Plassman et al. 2008, 2011) have examined trends in cognitive functioning among the Aging, Demographics, and Memory study subsample of HRS participants, 70+ years (ADAMS; Langa et al. 2005) or from the older adult sample in the Asset and Health Dynamics Among the Oldest Old

Study. This research has documented the prevalence of cognitive impairment among the older adult populations. Research examining the cognitive data in the entire sample of HRS has identified relationships between demographic factors (McArdle et al. 2007) and depression (González et al. 2008; Langa et al. 2009) in relation to memory performance. We are aware of only one study using HRS data that examined subjective memory in relation to objective performance (Hulur et al. 2014), although this study focused on ratings of memory ability and not on subjective ratings of memory change, as we have.

Relationship of Memory Performance and Self-Ratings

Assessment Method There are two approaches to measuring memory self-assessments: task specific and global. The former approach examines predictions or postdictions about performance on a test or frequency of different problems with everyday tasks. The latter approach measures general assessments of memory ability and/or change, without regard to a particular type of task. In the current study, we were interested in a general overview or global report about memory abilities (i.e., how would you rate your memory) and memory changes (i.e., how much has your memory changed). Such general self-reports of memory ability and change without reference to specific types of memory tasks or problems have been used as criteria for mild cognitive impairment (Petersen 2004).

Nature of the Sample Research examining relationships between performance and self-ratings has mainly been conducted in samples of limited size with limited age ranges. Studies typically include only older adults, small convenience samples, clinical samples, or participants who have memory complaints (Bassett and Folstein 1993; Coley et al. 2008; Comijs et al. 2002; Crane et al. 2007; Dux et al. 2008; Jorm et al. 1997; Rouch et al. 2008; Slavin et al. 2010; Snitz et al. 2008; Turvey et al. 2000; van Harten et al. 2013). Thus, much of this work may be limited by a restricted range in age and actual memory abilities. Self-reported concerns about memory are common and well-documented among older adults (Reid and MacLulich 2006). However, few studies have looked at memory concerns in midlife (Lachman 2004) despite evidence of objective memory decline as early as age 45 (Singh-Manoux et al. 2012) and the presence of neuropathology years before symptoms occur (Braak and Braak 1997). The inconsistent findings and low correlations between subjective and objective assessments suggest a need for additional work with population-based samples representing adults across the lifespan.

Population-based studies can provide a better understanding of memory concerns across a large range of age, education, and cognitive functioning levels. A recent Centers for Disease Control and Prevention (CDC) report (2013) using data from the Behavioral Risk Factor Surveillance Systems indicated that in the United States, 12.7 % of individuals over age 60 self-reported memory loss/confusion. Of those who reported memory loss, 35.2 % reported everyday functional difficulties as a result of this memory loss. However, population-based studies that have examined self-ratings of memory have not included objective cognitive data (Aarts et al. 2011; CDC 2013). The inclusion of objective cognitive data could be useful for understanding whether and how self-reports are related to performance in the general population (Zelinski et al. 2001).

Cognitive Performance The limited association between self-assessments and performance, noted in previous meta-analyses (Beaudoin and Desrichard 2011; Crumley et al. 2014), varies depending on the specific memory indicator that is measured (e.g., episodic memory task, working memory task). The weak relationship between subjective and objective memory assessments may also suggest that standard cognitive tests are not sensitive to early cognitive changes that adults may detect in their own lives. One population-based study of subjective memory (Mewton et al. 2013) that included a cognitive assessment, used a brief dementia screener [i.e., Mini-Mental State Examination (MMSE; Folstein et al. 1975)], which generally are not sensitive to normal age-related cognitive changes (see Lachman and Tun 2008).

In a Baltimore-area study that used an episodic memory measure, self-assessments of memory were related to objectively-measured memory performance on delayed recall and recognition tasks, but not to change in objective cognition after adjustment for demographic factors (Podewils et al. 2003). Episodic memory is the memory domain that shows the strongest relationship with memory self-assessments (Beaudoin and Desrichard 2011; Crumley et al. 2014), and is particularly sensitive to normal and early age-related changes in cognition. A meta-analysis identified that episodic memory deficits years prior to clinical diagnoses are associated with the risk of Alzheimer's disease (Bäckman et al. 2005). Further, declines in episodic memory are associated with increased risk of mild cognitive impairment (MCI), a pre-dementia state of cognitive functioning (Albert et al. 2007).

Accuracy of Self-Assessments

The weak relationship typically found between subjective and objective memory could signify that some individuals are accurate, and others are inaccurate. This suggests the need to examine variations in self-awareness of memory abilities and change. Some may underestimate or be unaware of their problems while others, often referred to as the “worried well” (Amariglio et al. 2012), may overestimate their memory problems. One study examined the nature of inaccuracy in a clinic-based sample of individuals using a cross-sectional study design (Zandi 2004). Zandi found that a small and equal number of participants underreported and overreported their memory abilities, although the majority of participants in the study were considered to meet criteria for probable dementia as assessed by the Cambridge Assessment of Mental Disorders in the Elderly (CAMCOG; Roth et al. 1986). It would be beneficial to examine awareness of memory in middle-aged and older cognitively normal, community-dwelling adults in order to understand the utility of self-reports before pathological changes are apparent.

Research has yet to examine to what extent individuals in the general population are accurate in reporting objective memory declines or deficits. Research is needed to better understand the nature of subjective memory ratings in relation to performance level and change across the adult lifespan. Understanding how self-reports of memory are related to performance has public health implications for identifying those at risk of decline who may go undiagnosed in early stages as well as those who may suffer unnecessary emotional distress when their memory is actually in the normal range.

The Current Studies

Using two large national datasets from the United States, the Midlife in the United States study (MIDUS) and the Health and Retirement Study (HRS), we examined factors related to memory performance, self-ratings of memory, and their relationship in middle-aged and older adults in the United States. In Study 1 (MIDUS), we examined memory performance, memory self-ratings (compared to others), and perceived memory change over the past 5 years at one occasion of measurement. An advantage of the MIDUS study is the inclusion of adults under the age of 50, given the evidence for cognitive declines before 50 (Agrigoroaei and Lachman 2011; Salthouse 2009; Singh-Manoux et al. 2012) and that concerns about memory are present and prevalent across adulthood (Lachman 2004). A key limitation of the MIDUS study is the cross-sectional design, which is addressed with the HRS design. Study 2 (HRS) included longitudinal data assessed every 2 years from 2002 to 2012 for a total of up to six interviews per person over 10 years. At each occasion, assessments included memory performance, memory self-ratings, and perceived memory change over the past 2 years.

In both Study 1 and Study 2, predictors of individual differences in objective memory performance and subjective memory were examined, controlling for factors known to be related to memory performance and self-assessments including demographic (age, gender, education, race, marital status, working status) and health (self-reported health, vascular factors, functional limitations, depression) factors, as well as neuroticism in Study 1. When examining performance as an outcome, self-ratings of memory were included as a predictor, and performance was included as a predictor of self-ratings, to examine these relationships when controlling for the demographic and health factors. Based on past work, we expected that older age, worse physical health, and lower education would be related to worse performance and greater declines in performance. Older age, female gender, depression, and higher neuroticism were expected to be related to worse self-ratings and greater perceived decline.

We hypothesized that after controlling for demographic and health factors there would be small associations of memory performance and self-ratings, consistent with past work, and perhaps indicative of limited self-awareness of actual memory abilities. We then conducted an analysis of the accuracy of self-ratings of memory and perceived change and examined what demographic and health factors were associated with accuracy and inaccuracy. In Study 1, we examined the extent to which those who performed at or below average relative to their age-matched peers also rated themselves as average or below in memory, and whether those who performed above average also rated themselves as above average. In Study 2, we examined the extent to which those who showed significant decline in memory over a 2 year period reported that their memory had declined over that period. We expected a substantial number of participants would be inaccurate about their memory ability level and change. We then examined which demographic and health factors were related to accuracy and inaccuracy.

Study 1 (MIDUS)

Method

Sample

Participants were assessed at the second occasion of the MIDUS study of pathways to health and well-being during midlife and old age (Radler and Ryff 2010). The mortality-adjusted retention rate was 75 % from Wave 1 ($N=7100$; 1994–6) to Wave 2 ($N=4955$; 2005–6). Participants were originally recruited with a random-digit dial (RDD) probability sampling procedure. The MIDUS study included siblings ($N=949$) of the main respondents, randomly selected from the RDD sample, and a subpopulation of twins ($N=1913$) obtained after screening a representative national sample of approximately 50,000 households. At Wave 2, the Brief Test of Adult Cognition by Telephone (BTACT, Lachman et al. 2014) was added to the protocol, and the current study includes the participants ($N=3581$) with complete data on all study variables at Wave 2. Participants not included in the current study were younger, had lower education, greater functional limitations, lower self-rated health, more vascular factors, higher neuroticism, and worse memory performance (p 's <0.05) at Time 2. There were no differences (p 's >0.05) in memory self-ratings (memory compared to others and perceived memory change) for people included versus not included in the current study. Participants in the current study were 56.09 years, on average ($SD=12.23$, Range: 32–85), 55.2 % were female, and they completed 14.44 years of education, on average ($SD=2.63$, Range: 6–20).

Measures

Memory Performance Participants completed the BTACT (Lachman et al. 2014; Lachman and Tun 2008; Tun and Lachman 2008), which measures fluid cognitive abilities, including episodic memory (Rey 1964). Participants listened to a list of 15 words and were asked to recall as many words as possible immediately and after a delay of approximately 12 min. A sum was computed (range: 0–30) of the scores for immediate ($M=6.82$, $SD=2.26$) and delayed word recall ($M=4.49$, $SD=2.61$), which were highly correlated [$r(3579)=0.79$, $p<0.001$].

Memory Self-Assessments They were measured in two ways: current self-rating and perceived change. Participants rated their current memory compared to others their age as (1) “excellent,” (2) “good,” (3) “average,” (4) “fair,” or (5) “poor.” For perceived memory change, participants rated their current memory compared to their memory 5 years ago as either (1) “improved a lot,” (2) “improved a little,” (3) “stayed the same,” (4) “gotten a little worse,” or (5) “gotten a lot worse.” Both items were reverse-scored so higher scores reflected a better self-rating.

Demographic Factors Demographic factors included age, gender, years of education, race, marital status, and work status. Race was coded as (0) White or (1) African-American or other race; marital status as (0) non-married and (1) married, and work status as (0) non-working and (1) working.

Health Factors Health factors included number of vascular factors, self-rated health (SRH), functional limitations, and depression. Vascular factors (range: 0–4) were measured as the total number of the following health conditions: diabetes or high blood sugar, heart trouble, stroke, and high blood pressure/hypertension. For SRH, participants rated their physical health as (5) poor, (4) fair, (3) good, (2) very good or (1) excellent. Items were reverse-coded so higher scores indicated better health. To measure functional limitations (Ware and Sherbourne 1992), participants rated whether their health limits them in with any of the following activities (items were included if the same questions were available in HRS data): lifting or carrying groceries; climbing several flights of stairs; bending, kneeling, or stooping; and walking several blocks. The total number of activities was summed (range 0–4), and higher scores represented a greater number of functional limitations. Depression at MIDUS II was coded as either absence (0) or presence (1) based on the Composite International Diagnostic Interview (CIDI) for clinical depression which has been used in previous work (Wang et al. 2000). Participants reported whether they experienced a 2-week period during the last year where they felt either 1) sad, blue, depressed or whether they 2) lost interest in most things. Participants who answered yes to either question then reported how often they felt that way during the 2-week period and whether they felt specific symptoms (e.g., “lose your appetite”). Participants were coded as having a presence of depression if 1) they answered yes to either of the two initial questions, 2) they felt that way either “every day” or “almost every day” during the 2-week period, and 3) they reported at least four symptoms.

Neuroticism To measure neuroticism (Lachman and Weaver 1997), participants reported the degree to which four adjectives describe them (moody, worrying, nervous, calm) on a scale of (1) a lot, (2) some, (3) a little, or (4) not at all. Scores for moody, worrying, and nervous were reverse-scored. The items were averaged so that higher scores indicated higher neuroticism.

Data Analysis Descriptive statistics including intercorrelations were computed for all study variables. To examine the factors related to self-assessments and memory performance, three linear regression models were conducted predicting memory performance, self-rated memory compared to others, and perceived memory change, respectively. In all models demographic variables, health factors, and neuroticism were included as simultaneous predictors. In addition, self-ratings of memory were included as predictors of memory performance and vice versa.¹

To examine the accuracy of self-assessments in relation to memory performance in MIDUS, self-ratings of memory relative to others of the same age were compared to age-matched memory performance. We dichotomized the self-ratings of memory: better than others your age (excellent or good) or average or worse than others your age (average, poor or fair). We also dichotomized each participant’s memory performance as: better than average for his/her age group (determined in 5-year age

¹ Because our total sample also included siblings of the main RDD respondents and a subpopulation of twins, all models were also estimated using the cluster option in STATA (StataCorp 2009). This option takes dependencies into account using robust standard errors by clustering at the family level. The results of these analyses revealed similar patterns. As sample weights were available for only the random-digit dial RDD sample of MIDUS participants, we did not apply them in the analyses.

increments) or equal to the average or worse than average for his/her age group. We then examined the percentage of participants in four groups: 1) accurate high-above average memory performance and self-report above average, 2) accurate low- average or below average memory performance and self-report average or below average, 3) inaccurate underestimation-above average memory performance and self-report average or below average, and 4) inaccurate overestimation-average or below average memory performance and self-report above average. We conducted multivariate analyses of variance with posthoc tests using the Bonferroni correction to determine whether the four accuracy groups differ on demographic and health factors.

Results

Descriptive Results

Means, standard deviations, and intercorrelations for all Study 1 variables are reported in Table 1. In Fig. 1, the frequency distributions for the self-ratings of current memory and perceived memory change are presented in Panels a and b, respectively. The majority of participants rated their memory as either “average” or “good,” compared to others their age, and reported their memory had either “gotten a little worse” or “stayed the same” in the past 5 years.

Relationship of Memory Performance and Self-Ratings

Predictors of Memory Performance Model 1 in Table 2 shows the predictors of memory performance (total recall score). Worse memory performance was significantly associated with an older age, male gender, lower education, non-White race, worse self-rated health, higher neuroticism, and lower self-assessments of memory (p 's<0.05).

Predictors of Self-Ratings Models 2 and 3 in Table 2 display the results of regression analyses predicting memory self-assessments. Lower memory ability self-ratings were significantly associated with younger age, lower education, greater functional limitations, worse self-rated health, more depression, higher neuroticism, and worse memory performance (p 's<0.05). Greater perceived decline was significantly associated with older age, higher education, being married, greater functional limitations, lower self-rated health, fewer vascular factors, more depression, and higher neuroticism (p 's<0.05). Memory performance was not a significant predictor of perceived decline.

Accuracy of Self-Ratings We examined the accuracy of self-ratings (above average versus average or below) in relation to memory performance (age-matched above average versus average or below). Figure 2 shows the breakdown of accuracy and inaccuracy when comparing self-ratings and performance. As shown on the right side of the figure, almost half of the sample (46.9 %) was inaccurate about their memory ability relative to others the same age. Among those who were below average in performance (the second and fourth bars), only about half (49.2 %) were aware of their standing.

Table 1 Descriptive statistics and intercorrelations for all variables in MIDUS (N=3581)

Variable	M(SD) or %	1	2	3	4	5	6	7	8	9	10	11	12	13
1. Age	56.09 (12.23)	1												
2. Gender (% female)	55.2	-0.23	1											
3. Education (range: 6–20 years)	14.44 (2.63)	-0.14	-0.10	1										
4. Race (% White)	92.9	-0.05	0.00	-0.03	1									
5. Marital status (% married)	72	-0.09	-0.15	0.05	-0.10	1								
6. Working status (% working)	52.4	0.46	0.03	-0.15	-0.02	-0.01	1							
7. Functional limitations	1.45 (1.54)	0.34	0.13	-0.23	0.02	-0.12	0.28	1						
8. Self-rated health	3.59 (1.00)	-0.15	0.00	0.26	-0.07	0.09	-0.19	-0.52	1					
9. Number of vascular factors	0.68 (0.83)	0.37	-0.08	-0.11	0.02	-0.01	0.23	0.37	-0.39	1				
10. Depression (% presence)	8.8	-0.10	0.12	-0.06	0.02	-0.08	0.04	0.12	-0.16	0.04	1			
11. Total Recall Score	11.31 (4.61)	-0.32	0.24	0.21	-0.07	0.00	-0.16	-0.16	0.17	-0.18	0.03	1		
12. Memory rating	3.53 (0.90)	0.00	-0.03	0.19	-0.02	0.03	-0.07	-0.28	0.39	-0.16	-0.18	0.12	1	
13. Perceived memory change	2.60 (0.71)	-0.01	-0.04	0.01	0.03	-0.05	-0.02	-0.12	0.14	-0.03	-0.12	0.00	0.48	1
14. Neuroticism	2.06 (0.62)	-0.17	0.10	-0.08	0.02	-0.04	-0.04	0.12	-0.19	0.01	0.25	0.00	-0.23	-0.20

Bolded values are statistically significant ($p < 0.05$). Gender was coded as (1) female or (0) male, race was coded as (1) non-White or (0) White, marital status was coded as (1) married or (0) not married, working status was coded as (1) working or (0) not working, and depression was coded as (1) presence or (0) absence. Memory rating compared to others their age was coded as (1) poor to (5) excellent. Perceived memory change compared to their memory 5 years ago was coded as (1) gotten a lot worse to (5) improved a lot

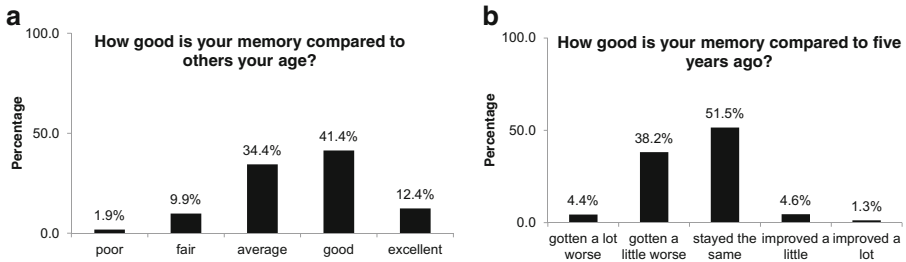


Fig. 1 Self-assessments of memory compared to others (Panel a) and perceived change (Panel b) in MIDUS (N=3581)

Multivariate analysis of variance showed that the accuracy groups differed on all demographic and health factors (Wilk’s Lambda $F(33, 10992)=27.23, P<0.001$. [Gender: $F(3, 3741)=72.45, p<0.001$; Race: $F(3, 3741)=6.19, p<0.001$; Education: $F(3, 3741)=60.33, p<0.001$; Work status: $F(3, 3741)=4.12, p=0.006$; Functional health: $F(3, 3741)=64.15, p<0.001$; Self-rated health: $F(3, 3741)=149.51, p<0.001$; Vascular problems: $F(3, 3741)=23.23, p<0.001$; Depression: $F(3, 3741)=16.62, p<0.001$; Neuroticism: $F(3, 3741)=43.23, p<0.001$] except Age and Marital Status. Participants who underestimated their performance (those with above average memory performance and

Table 2 Multiple regressions predicting memory performance and self-assessments of memory in MIDUS (N=3581)

	Model 1			Model 2			Model 3		
	Memory performance			Memory rating ^a			Perceived memory change ^a		
	B	SE	p	B	SE	p	B	SE	p
Intercept	8.49	0.79	0.001	2.29	0.15	0.001	3.22	0.13	0.001
Age	-0.11	0.01	0.001	0.01	0.00	0.001	0.00	0.00	0.015
Gender	2.34	0.14	0.001	-0.01	0.03	0.753	-0.02	0.03	0.363
Education	0.28	0.03	0.001	0.03	0.01	0.001	-0.01	0.01	0.008
Race	-1.41	0.27	0.001	0.06	0.05	0.237	0.09	0.03	0.055
Marital status	-0.07	0.16	0.644	-0.03	0.03	0.345	-0.12	0.03	0.001
Working status	0.05	0.16	0.754	-0.01	0.03	0.686	0.03	0.03	0.332
Functional limitations	-0.04	0.06	0.454	-0.06	0.01	0.001	-0.03	0.01	0.002
Self-rated health	0.20	0.09	0.026	0.24	0.02	0.001	0.07	0.01	0.001
Number of vascular factors	0.01	0.10	0.942	-0.02	0.02	0.326	0.04	0.02	0.020
Depression	0.19	0.26	0.453	-0.24	0.05	0.001	-0.16	0.04	0.001
Neuroticism	-0.29	0.12	0.015	-0.18	0.02	0.001	-0.20	0.02	0.001
Memory performance				0.01	0.00	0.001	0.00	0.00	0.538
Memory rating	0.35	0.09	0.001						

Bolded values are significant ($p<.05$). Gender was coded as (1) female or (0) male, race was coded as (1) non-White or (0) White, marital status was coded as (1) married or (0) not married, working status was coded as (1) working or (0) not working, and depression was coded as (1) presence or (0) absence

^a Higher scores indicate a higher memory rating and greater stability (less decline) for perceived memory change

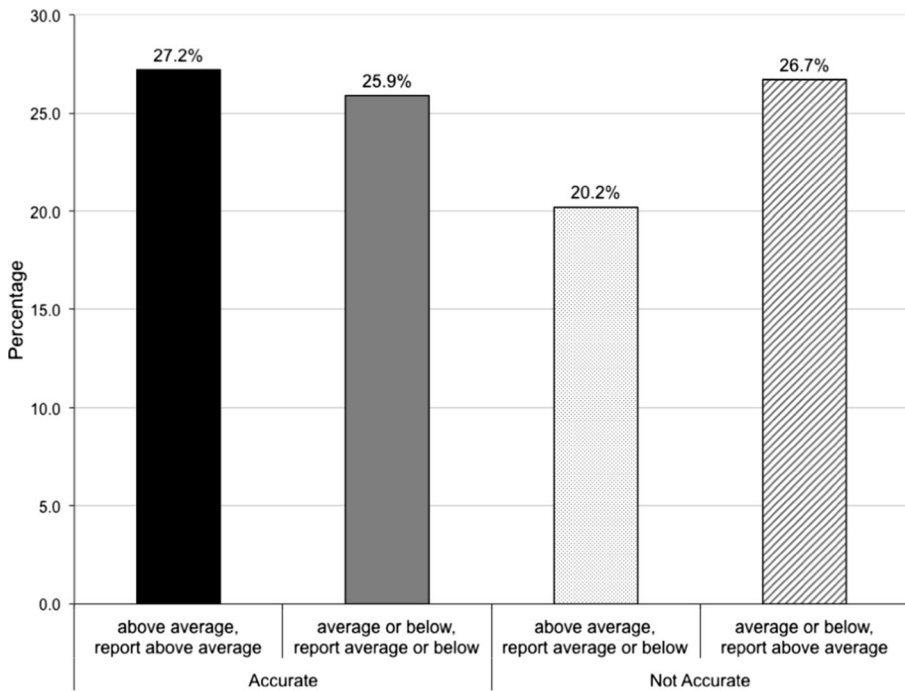


Fig. 2 Relationship of objective memory performance and subjective ratings compared to others your age in MIDUS ($N=3581$). *Note.* Memory was defined as (1) above average versus (2) average or below compared to age-matched participants (determined in 5-year age groups). For memory self-ratings participants rated their memory as (1) better than average versus (2) average or below compared to others your age

self-report average or below average) were more likely to have lower education, worse physical health, higher neuroticism, and depression compared to the high accurate group (those with both memory performance and self-ratings above average). Compared to those who were low accurate, participants who overestimated their memory (average or below memory performance and self-report above average) were more likely to not work, have higher education, better physical health, lower neuroticism, and no depression.

Study 1 Discussion

Study 1 examined the relationship of memory performance and self-assessments in adults ages 32 to 85 in a national sample. Self-assessments of memory ability were related to memory performance, however, subjective memory changes were not significantly related to actual memory change. Furthermore, when we examined the nature and frequency of accuracy in self-assessments of memory compared to others the same age and in relation to objective memory performance, almost half of participants were inaccurate in their self-ratings, suggesting a substantial lack of self-awareness about memory abilities. Among those with average or below memory performance, about 25 % did not rate it as such. Furthermore, among those with memory performance better than their age peers, approximately 20 % did not acknowledge it, suggesting that among participants with good memory for their age, a substantial number underestimate their ability and may also be unnecessarily

concerned or worried. The accuracy groups differed in terms of demographic and health factors, indicating that better physical health and being male is associated with overestimating your memory, and worse physical health, depressive symptoms, and being female is associated with underestimating your memory.

When the predictors of objective performance were compared to those for subjective ratings, the results show that, as expected, older participants had worse memory performance and greater perceived decline, but unexpectedly, younger participants were more likely to rate their memory as worse compared to others their age. The finding that age positively predicted self-rated memory indicates that older adults, more so than younger adults, assume their memory is better than that of their age-matched peers. Lower education was associated with worse performance and worse current self-ratings, but higher education was associated with greater perceived declines similar to past work which has found higher educated individuals may be particularly sensitive to cognitive changes (Caracciolo et al. 2012). Males had worse episodic memory performance which is consistent with previous work (Herlitz and Rehnman 2008), although there were no gender differences in self-ratings. Better self-rated health, better functional health, and lower neuroticism were associated with better memory performance and self-ratings. Consistent with previous research, depression was associated with worse self-ratings, although it was unrelated to memory performance.

There was a small but significant correlation between self-ratings and performance as others have found (Beaudoin and Desrichard 2011; Crumley et al. 2014). Furthermore, when exploring the match between performance and ratings, only half of those who have worse memory performance than their peers actually rated their memory as worse. This could indicate that many adults who have a poor memory are unaware or unwilling to report those deficits. It could also be that in making self-ratings of memory the participants focused on aspects of their daily memory experience other than episodic memory as captured with the objective word list recall test. The criteria for MCI (Albert et al. 2011) include subjective assessments of cognition, and there is evidence that subjective assessments of change without objective changes are indicative of AD (Jessen et al. 2014). Nevertheless, accurate self-ratings of memory may be important for identifying early signs of change and opportunities for early intervention especially among those in middle age.

Study 2 expanded the goals of Study 1 to include longitudinal changes in memory performance in relation to self-assessments of change. We examined the match between subjective change and actual change in a large representative sample of adults over the age of 50.

Study 2 (HRS)

Method

Sample

Participants from Study 2 were from the HRS, a longitudinal nationally-representative panel survey of individuals in the United States over 50 years of age and their spouses (Heeringa and Connor 1995; Juster and Suzman 1995). Data were downloaded from the HRS website (<http://hrsonline.isr.umich.edu/>). Data collection for HRS began in 1992 ($N=12,652$), and interviews are conducted biennially in-person and by telephone.

Participants who were between 51 and 61 years of age in 1992 were invited to participate and Black and Hispanic individuals and Florida residents were oversampled. Participants over the age of 50 and their spouses have been added to the study in subsequent waves. The response rate from the baseline interview to the first follow-up was 81.6 %.

The current study includes data from 2002 to 2012 for participants ($N=14,821$) who met the following criteria: a) complete data on all study variables at our first assessment point in 2002, b) between 50 and 90 years of age in 2002,² and c) no memory-related disease in 2002. Compared to participants with complete data from 2002 to 2012, participants who dropped out after 2002 were older, less educated, had more functional limitations and vascular factors, worse memory performance, and self-rated their memory as worse ($p<0.05$). The longitudinal trajectories for memory performance (Fig. 3) and self-ratings (Fig. 4) as a function of the year of assessment show that the selective attrition was more pronounced for performance than for self-ratings. For performance, although the downward trajectories look similar for those who have partial data, level of memory is better at all occasions for those who have complete data. Participants included in the current study were on average, 67.76 years old ($SD=9.01$, Range: 50–89), 60.7 % were female, and participants completed on average, 12.34 years of education ($SD=3.16$, Range: 0–17).

Measures

Memory Performance Episodic memory was assessed with the sum of immediate and delayed (after 5 min) recall for a list of 10 words (McArdle et al. 2007). Thus, scores could range from 0 to 20. Immediate ($M=5.49$, $SD=1.77$) and delayed ($M=4.48$, $SD=2.13$) recall were both measured every 2 years from 2002 to 2012 for a total of up to six occasions per person. Immediate and delayed recall scores were highly correlated [$r(14,819)=0.74$, $p<0.001$], at the first occasion. The 2-year (2002–2004, 2004–2006, etc.) test-retest correlations for memory performance ranged from $r=0.46$ ($p<0.001$) to $r=0.57$ ($p<0.001$). For more information about the cognitive measures in the HRS see Ofstedal, Fisher, and Herzog (2005) and McArdle et al. (2007).

Memory Self-Ratings Self-assessments of memory were assessed in HRS in two ways: current memory rating and perceived memory change. Participants were asked to rate their current memory on the following scale: (1) excellent, (2) very good, (3) good, (4) fair, and (5) poor. Participants also rated their memory compared to their own memory 2 years ago with answer choices including (1) better, (2) same, and (3) worse. Both items were reverse-scored so higher scores represented better memory and improvement over time. Self-ratings were assessed every 2 years from 2002 to 2012 for a total of six occasions per person. The 2-year (2002–2004, 2004–2006, etc.) test-retest correlations for self-rated current memory ranged from $r=0.60$ ($p<0.001$) to $r=0.57$ ($p<0.001$), and from $r=0.33$ ($p<0.001$) to $r=0.38$ ($p<0.001$) for perceived memory change.

² Participants 90 and older at baseline were excluded in order to examine longitudinal change in cognitive data and because of the lack of follow-up data available from those aged 90 and older following the 2002 interview.

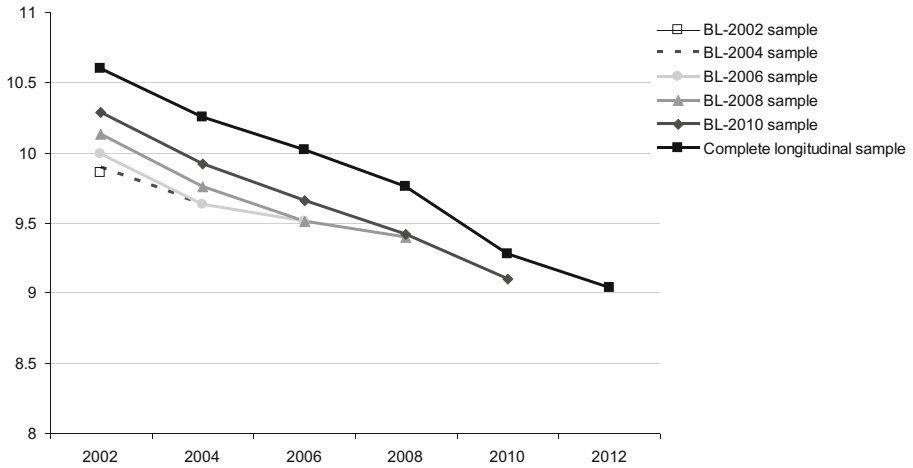


Fig. 3 Recall scores by longitudinal wave. *Note.* BL baseline

Demographic Factors Age, gender, education, race, marital status, and work status were included as covariates and measured at baseline in 2002. Race was coded as (0) White and (1) African-American or other; marital status as (0) non-married and (1) married and work status as (0) non-working and (1) working.

Health Factors Health factors, which were also measured at baseline, included self-rated health, functional limitations, vascular factors, and depression. Self-rated health was measured by asking participants to rate their health as (1) excellent, (2), very good, (3), good, (4) fair, or (5) poor. Answer choices were reverse-scored so higher scores indicated better health. Functional limitations were measured by asking participants, “Because of a health problem do you have any difficulty with” the following activities: walking several blocks; stooping, kneeling, or crouching; lifting or carrying weights over ten pounds, like a bag of groceries; and climbing several flights of stairs without

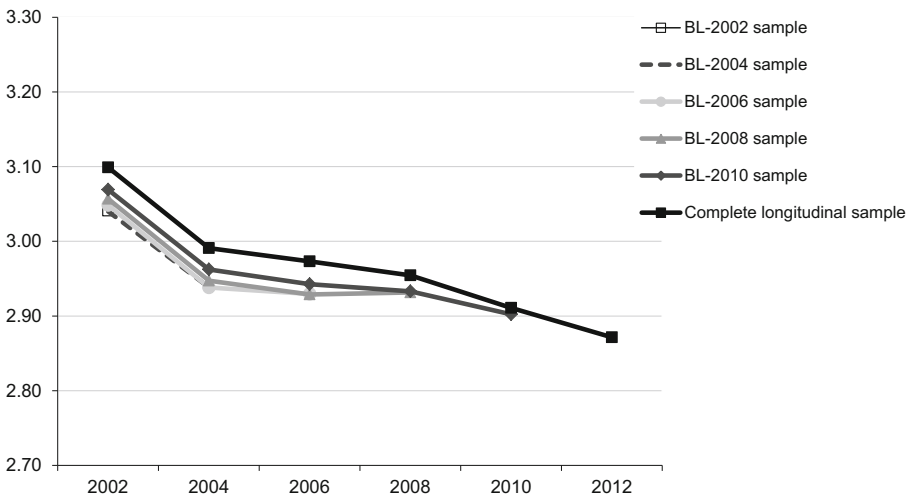


Fig. 4 Memory self-ratings by longitudinal wave. *Note.* BL baseline

resting. The final score was the total number of activities the participants had difficulties doing because of a health problem. Number of vascular factors (range: 0–4) was measured by asking participants whether a doctor ever told them that they had the following health conditions: 1) diabetes or high blood sugar; 2) hypertension or high blood pressure; 3) heart attack, coronary heart disease, angina, congestive heart failure, or other heart problems; and, 4) stroke. Depression was measured using the 8-item version of the Center for Epidemiological Studies Depression Scale (Kohout et al. 1993; Radloff 1977), with less than 4 symptoms as (0) no elevated depression and a cutoff of 4 or more symptoms indicative of (1) elevated depressive symptoms (Steffick 2000).

Data Analysis

Descriptive analyses and intercorrelations were conducted for all study variables. To examine the predictors of self-assessments and performance, three separate multilevel models were run using PROC MIXED and SAS Version 9.2. In three separate models, demographic and health factors were examined as predictors of level and change in self-assessments of memory (current memory rating and self-perceived change across six occasions) and also level and change for memory performance (total recall score on six occasions).³ An advantage of the use of multilevel modeling to examine change is the ability to examine longitudinal data with participants who do not have complete data across all occasions. Unconditional models were initially conducted predicting the three dependent variables 1) memory performance, 2) memory self-ratings, and 3) perceived memory change from 2002 to 2012 to calculate the intraclass correlation coefficients. Results revealed that for memory performance, 58 % of the variation was between-persons and 42 % within-persons, and for self-ratings of current memory, 55 % of the variation was between-persons and 45 % of the variation within-persons. Lastly, for perceived memory change, 32 % of the variation was between-persons and 68 % of the variation within-persons.

Accuracy of perceived change in relation to actual change in memory performance was examined. We dichotomized perceived memory change in the past 2 years at the first follow-up as decline (worse) or no decline (same or better). For memory performance, we computed difference scores between each 2 year pair (2002–2004, 2004–2006, etc.). Mean memory change from 2002 to 2004 was -0.31 ($SD=3.28$) and one standard deviation below the change score mean (i.e., -3.59) was rounded to four to determine the cutoff for decline. One standard deviation below the mean on cognitive tests

³ Analyses were conducted using sample weights to account for oversampling of Black and Hispanic individuals and Florida residents, and to reflect the United States census population in 2002 at baseline for the current study (Heeringa and Connor 1995). Results were similar, with a few exceptions. In Model 1, with memory performance as an outcome, the interaction between SRH and time was no longer significant. In Model 3, with perceived memory change as an outcome, the effect of race was no longer significant and the effect of memory performance became significant. Also, due to the nature of the study design, some participants from the same households are included in the HRS. Thus, multilevel models were used to examine three-levels (level 1: within-person, level 2: within-household, and level 3: between-households) to account for the clustering of data and sample dependencies. These findings revealed no differences from the two level model examining within-person and between-person change over time and therefore are not reported.

corresponds to neuropsychological definitions of mild memory loss or MCI (Nasreddine et al. 2005). Thus, across all occasions, significant memory decline was operationalized as a decrease of four or more words over 2 years. The memory change scores from 2002 to 2004 were dichotomized as either decline (decrease of 4 or more words) or no decline (decrease of three words or less), and the same was done for 2004 to 2006, and so on across all years. The percentage of participants in the following four groups was reported: 1) accurate no decline: no memory decline, self-report no decline, 2) accurate decline: memory decline, self-report decline, 3) inaccurate about no decline: no memory decline, self-report decline, and 4) inaccurate about decline: memory decline, and self-report no decline. Sensitivity analyses were conducted to examine different ways of operationalizing change in memory performance (decline operationalized as a difference of one or more words versus zero words for no decline) and also using five words as a cutoff (decline equal to a difference of five or more words versus zero for no decline) which is the equivalent of 1.5 standard deviations from the mean of the change score.³ We then conducted multivariate analyses of variance with the Bonferonni correction for multiple comparisons to examine what demographic and health factors were associated with the accuracy groups.

Results

Descriptive Results

Means, standard deviations, and intercorrelations for all Study 2 variables are presented in Table 3. In Fig. 5, Panels a and b display the distribution self-assessments of current memory ability and perceived memory change, respectively. The majority of participants rated their memory ability as “good” and the “same” compared to 2 years ago.

Relationship of Memory Performance and Self-Ratings

Predictors of Level and Change in Memory Performance We initially estimated a model with only time as a predictor of memory performance from 2002 to 2012, and these results revealed a significant decline in memory performance over the 10 years [Estimate(Est.)=-0.34, Standard error (SE)=0.01, ($p < 0.001$)]. Demographic and health factors were then added as predictors of memory performance. Model 1 in Table 4 displays the results of multilevel analyses predicting level (main effects) and change (interactions with time) for memory performance from 2002 to 2012. Worse memory performance was significantly associated with being older, male gender, lower education, non-White race, not working, a greater number of functional limitations, lower self-rated health, more vascular factors, more depressive symptoms, and worse self-rated memory (p 's < 0.05). Some predictors were significantly related to change in memory performance as shown in the interaction with time. These results show that older adults, female participants, and those with higher education and lower self-rated health declined more over time (p 's < 0.05). A comparison of the covariance parameters in the unconditional model revealed that Model 1 explained 24 % of between-person variation in memory performance.

Table 3 Descriptive statistics and intercorrelations for all variables in HRS at Baseline in 2002 ($N=14,821$)

Variable	M(SD) or %	1	2	3	4	5	6	7	8	9	10	11	12
1. Age (range 50–89)	67.76 (9.01)	1											
2. Gender (% female)	60.7	-0.03	1										
3. Education (range 0–17)	12.34 (3.16)	-0.12	-0.07	1									
4. Race (% White)	84.3	-0.07	0.05	-0.16	1								
5. Marital status (% married)	63.5	-0.22	-0.22	0.11	-0.14	1							
6. Working status (% working)	29.7	-0.45	-0.06	0.16	0.00	0.09	1						
7. Functional limitations	1.32 (1.37)	0.17	0.17	-0.19	0.07	-0.14	-0.18	1					
8. Self-rated health	3.21 (1.10)	-0.14	-0.03	0.30	-0.14	0.14	0.17	-0.52	1				
9. Number of vascular factors	1.01 (0.94)	0.20	-0.05	-0.14	0.11	-0.07	-0.16	0.33	-0.39	1			
10. Depression (% elevated symptoms)	15.1	0.03	0.09	-0.18	0.06	-0.15	-0.05	0.30	-0.31	0.13	1		
11. Total Recall Score	9.97 (3.64)	-0.34	0.15	0.34	-0.12	0.10	0.16	-0.18	0.24	-0.19	-0.13	1	
12. Memory rating	1.82 (0.43)	-0.07	0.02	0.25	-0.10	0.04	0.11	-0.20	0.33	-0.13	-0.17	0.22	1
13. Perceived memory change	3.06 (0.90)	-0.04	-0.01	0.02	0.02	-0.01	0.05	-0.16	0.18	-0.08	-0.15	0.07	0.34

Bolded values are significant at $p < 0.05$ level. Gender was measured as (1) female and (0) male. Race was measured as (1) Non-White and (0) White. Marital status was measured as (1) married and (0) not married, and working status as (1) working and (0) non-working. Functional health was measured as the number of items (0–4) participant reported difficulty with including climbing several flights of stairs, lifting or carrying weights, walking several blocks, and kneeling, bending or stooping. Self-rated health was measured on a 5-point scale from (1) poor to (5) excellent. Vascular factors were the sum (0–4) of the following conditions: diabetes, hypertension, stroke, and heart problems. Perceived memory change was coded as (1) worse, (2) stayed the same, and (3) better. Memory rating was coded as (1) poor to (5) excellent



Fig. 5 Self-ratings of memory (Panel a) and perceived change (Panel b) in HRS sample at baseline in 2002 ($N=14,821$)

Predictors of Level and Change in Self-Ratings We first computed a model with only time as a predictor of self-rated memory from 2002 to 2012, and these results revealed a significant decline over time (Est. = -0.04 , $SE=0.00$, $p<0.001$). Model 2 in Table 4 illustrates the results of multilevel models predicting both level (main effects) and change (interactions with time) for current memory ratings from 2002 to 2012. Worse memory ratings were significantly associated with younger age, male gender, lower education, non-White race, being married, non-working status, worse self-rated health, and fewer vascular factors and depressive symptoms (p 's <0.05). Some predictors were significantly related to change in self-ratings over time. These results suggest that older adults, participants with higher education, working participants, participants with better self-rated health, and those with more depressive symptoms report significantly worse self-ratings over time (p 's <0.05). A comparison of the unconditional model covariance parameters revealed that the current model explains 2 % of the between-person variance.

We first estimated a model with only time as a predictor of perceived memory change from 2002 to 2012, and these results revealed that perceptions of decline became more pronounced later in time (Est. = -0.01 , $SE=0.00$, $p<0.001$). Predictors of level and change in perceived memory change from 2002 to 2012 are reported in Model 3 in Table 4. Greater perceived decline was significantly associated with higher education, White race, being married, greater functional limitations, worse self-rated health, and more depression (p 's <0.05). Some predictors were significantly related to change in perceived decline. These results show that older adults and White participants reported significantly greater perceived decline over time. A comparison of the unconditional model covariance parameters revealed that the current model explains 6 % of the between-person variance.

Accuracy of Self-Ratings To examine accuracy in self-ratings of perceived change, the relation between 2004 self-ratings of perceived change over the past 2 years (self-rating of decline versus no decline) and actual change from 2002 to 2004 (decline or no decline) was examined.⁴ The right panel of Fig. 6 shows that a total of 31.9 % were not accurate about their performance change. Of the 16 % percent ($n=2108$) of the sample

⁴ Memory change was examined in all other years, 2004 to 2006, 2006 to 2008, 2008 to 2010 and 2010 to 2012 in relation to self-ratings of perceived change. There were similar rates of decline (2004–6: 13.3 %, 2006–8: 14.3 %, 2008–10: 17.5 %, 2010–12, 15.1 %) and there were similar rates of accuracy and inaccuracy; thus for parsimony only results from the baseline year are reported in Fig. 6.

Table 4 Multilevel models predicting level and change in performance and self-assessments in HRS from 2002 to 2012 ($N=14,821$)

	Model 1			Model 2			Model 3		
	Memory performance			Memory rating ^a			Perceived memory change ^a		
	Est.	SE	<i>p</i>	Est.	SE	<i>p</i>	Est.	SE	<i>p</i>
Intercept	11.49	0.30	0.001	1.38	0.09	0.001	1.85	0.04	0.001
Main effects									
Self-rating in 2002	0.35	0.03	0.001						
Performance in 2002				0.03	0.00	0.001	0.00	0.00	0.092
Age	-0.10	0.00	0.001	0.00	0.00	0.001	0.00	0.00	0.103
Gender	1.18	0.05	0.001	0.04	0.02	0.005	0.00	0.01	0.727
Education	0.29	0.01	0.001	0.04	0.00	0.001	-0.01	0.00	0.001
Race	-1.01	0.07	0.001	-0.11	0.02	0.001	0.02	0.01	0.035
Marital status	0.03	0.06	0.638	-0.05	0.02	0.001	-0.04	0.01	0.001
Working status	0.21	0.06	0.001	0.09	0.02	0.001	-0.01	0.01	0.388
Functional limitations	-0.08	0.02	0.001	-0.01	0.01	0.174	-0.02	0.00	0.001
Self-rated health	0.16	0.03	0.001	0.21	0.01	0.001	0.05	0.00	0.001
Vascular factors	-0.10	0.03	0.002	0.03	0.01	0.000	0.00	0.00	0.482
Depression	-0.42	0.08	0.001	-0.16	0.02	0.001	-0.13	0.01	0.001
Time effects									
Self-rating in 2002	-0.02	0.01	0.001						
Performance in 2002				0.00	0.00	0.371	0.00	0.00	0.979
Age	-0.02	0.00	0.001	0.00	0.00	0.001	0.00	0.00	0.001
Gender	-0.03	0.01	0.038	0.00	0.00	0.291	0.00	0.00	0.978
Education	-0.01	0.00	0.005	0.00	0.00	0.001	0.00	0.00	0.032
Race	0.00	0.02	0.956	0.01	0.00	0.054	0.01	0.00	0.004
Marital status	0.04	0.01	0.002	0.00	0.00	0.954	0.00	0.00	0.898
Working status	0.01	0.01	0.654	-0.01	0.00	0.040	0.00	0.00	0.145
Functional limitations	0.01	0.01	0.052	0.00	0.00	0.675	0.00	0.00	0.904
Self-rated health	0.01	0.01	0.048	-0.01	0.00	0.005	0.00	0.00	0.429
Vascular factors	-0.01	0.01	0.063	0.00	0.00	0.108	0.00	0.00	0.594
Depression	0.03	0.02	0.140	0.01	0.01	0.009	0.01	0.00	0.001

Bolded values are significant ($p<.05$).

^a Higher scores indicate a higher rating of memory ability and greater stability (less decline) for perceived memory change.

who declined (4 or more words) from 2002 to 2004 (the second and fourth bars), 75 % (12 % out of 16 %) were inaccurate about this change.

Multivariate analyses of variance identified that there were differences between the accuracy groups for all of the demographic and health measures: Wilk’s Lambda $F(27, 38274)=20.56, p<0.001$ [(Age: $F(313,113)=14.09, p<0.001$; Gender: $F(313,113)=7.49, p<0.001$; Work status: $F(313,113)=13.40, p<0.001$; Depression: $F(313,113)=90.04, p<0.001$; Functional health: $F(313,113)=78.55, p<0.001$, Vascular problems:

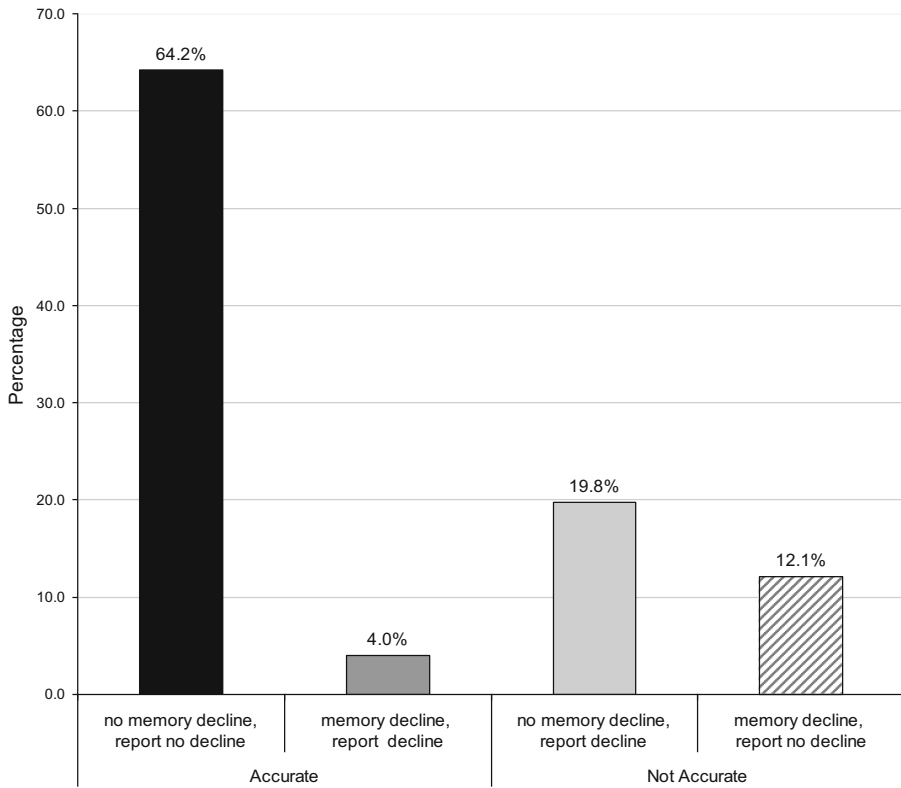


Fig. 6 Relationship of change in objective memory performance and perceived memory change in HRS from 2002 to 2004 ($N=13,117$)^a. *Note.* ^aParticipants ($N=13,117$) with complete data at both 2002 and 2004 were included in the representation of accuracy of perceived memory change. Memory decline was defined as decline (decrease of four or more words) versus no decline (decrease of 3 words or less) in the past 2 years from 2002 to 2004. Participants self-reported their perceived memory change in the past 2 years as declined (gotten worse) or no decline (stayed the same or gotten better)

$F(313,113)=18.46, p<0.001$; Self-rated health: $F(313,113)=95.77, p<0.001$] except Marital Status and Education. Those who inaccurately reported memory decline amidst no memory decline were more likely to be older, not work, have worse physical health and depression compared to those who were accurate about their memory decline (no memory decline, self-report no decline). Those who experienced decline but did not report it were more likely to work and have better functional health, better self-rated health and fewer depression symptoms compared to those who experienced decline and accurately reported it.

Study 2 Discussion

We examined factors related to memory performance, self-ratings, and their relationship using longitudinal data from HRS. Our analyses identified some differences in predictors of self-ratings versus performance. Furthermore, we found a fair degree of inaccuracy in self-assessments of memory such that only a small percentage of

participants who declined over a given 2-year period, actually reported they had declined; furthermore, some who did not show actual declines reported that their memory had declined. As expected, those who had worse memory performance were older in age, although a younger age was associated with lower self-assessments of memory, and age was not related to subjective memory decline. Thus, as expected, reports of memory problems occur across adulthood, and are not confined to later ages. Men had worse current memory ratings and worse performance than women, but gender was not related to perceived change. As expected, those with lower education had lower current self-ratings and worse performance. Moreover, consistent with findings on accelerated cognitive decline (Hall et al. 2007), it was higher educational attainment that was associated with greater declines in memory performance over time. Married participants rated their memory as worse and reported more decline, but did not have worse memory performance. Poor health and greater depression were related to both worse ratings of memory and memory performance.

Although 16 % of the sample had declines of four or more words over 2 years, the majority of them were not accurate in their self-ratings of perceived change, as they did not report that their memory had gotten worse. Furthermore, when examining the 84 % of participants who did not decline, a quarter of them were inaccurate and reported that their memory had declined. The results indicated that 12 % of the population was not aware of or did not acknowledge a significant decline in memory performance as measured by a test of episodic memory. Furthermore, almost 20 % of the population could be considered “worried well” as they reported declines even though their memory had not significantly declined. When examining factors associated with accuracy versus inaccuracy in self-reports of memory decline, physical health was found to differentiate among inaccuracy groups. Specifically, those reporting memory decline amidst no decline had worse health than those who did not report actual declines.

General Discussion

We examined memory performance and self-assessments, their relationship, and their predictors in two national samples with cross-sectional and longitudinal data from participants across adulthood. In both studies, the largest proportion rated their memory as “good,” regardless of where this answer choice was located on a 5-point Likert-type scale (i.e., in MIDUS good was 4 out of 5; in HRS good was 3 out of a 5 point scale). Despite this positive assessment of abilities, when it came to perceived change, 43 % reported decline over 5 years in MIDUS and 24 % percent reported decline over a 2 year period in HRS.

Concerns about memory decline, which are prevalent across adulthood, are not necessarily indicative of true memory problems. Although ratings of memory ability were significantly related to memory performance when controlling for demographic and health covariates, ratings of perceived memory change were not related to level or change in memory performance. Consistent with previous research, the relationship between self-ratings and performance was weak. This is reflected in the large number of participants who were inaccurate in their self-ratings of memory, whether they were

rating their memory compared to others their age (in MIDUS) or to themselves 2 years ago (in HRS).

In both studies, older age, male gender, lower education, non-White race and worse health were all associated with lower memory performance. In HRS, but not in MIDUS, depression was associated with worse memory performance. This is consistent with previous HRS studies (González et al. 2008). The lack of association in MIDUS may be due to the lower prevalence and more clinical nature of the depression variable in MIDUS. Interestingly, in both studies, whereas younger age was associated with better memory performance, a younger age was also associated with lower subjective memory, suggesting that low self-ratings are not restricted to older adults. Predictors of perceived change in both studies included higher education, White race, being married, worse health, and depression. The finding that higher education was related to greater perceived decline is consistent with past work (Caracciolo et al. 2012), suggesting that those with higher education may report declines based on more subtle changes in memory due to their reliance on high level cognitive functioning.

With regard to the inaccuracy of self-ratings of memory, we found that almost half of the MIDUS sample and a third of the HRS sample were inaccurate when subjective ratings were compared to objective performance and that these groups differed in terms of both demographic and health factors. Among the inaccurate participants, there were some who were unaware of deficits or declines in memory, and others who reported deficits or declines when they were not experiencing them (i.e., the “worried well”). Half of participants in the MIDUS study with memory performance that was at the average or below their age-matched peers on a word recall test reported that their memory was better than their peers. This is consistent with findings in other domains which show that Americans typically rate themselves as “better-than-average” (Guenther and Alicke 2010). When we looked at accuracy in HRS, we found that a large proportion of participants in HRS were “inaccurate” regarding their memory change in the past 2 years, even with a conservative cutoff of four words as indicative of decline. We adopted a relatively conservative criterion of four words, or approximately one standard deviation from the mean, to operationalize significant decline, based on the criteria for mild memory loss (Nasreddine et al. 2005). Sensitivity analyses revealed that compared to the cutoff of 4 or more words that was used, the overall pattern of accuracy results did not change when any decline (1 word or more) or 1.5 standard deviations from the mean (5 words or more) were used as the cutoff.

Both studies have some limitations that can be addressed in future work. The studies only examined episodic memory, and other domains of memory (e.g., prospective memory) should be examined in relation to self-assessments, as adults may be thinking about other aspects of memory related to daily functioning when they make their ratings. Nevertheless, episodic memory is a useful measure as it is central component of the diagnostic criteria for Alzheimer’s disease and shows age-related declines (Dubois et al. 2007).

For MIDUS we note that the diabetes variable included in the measure of vascular factors was slightly different from HRS. In MIDUS, participants were asked whether they had been treated for diabetes within the past 12 months (10 % reported yes), whereas in HRS participants were asked whether a doctor has ever told them they have diabetes (17 % reported yes). This differential time frame may explain why in HRS vascular factors were associated with worse memory performance and in MIDUS vascular factors were not a significant predictor of worse memory performance.

Another consideration is that the HRS sample was older, on average, and the effects of vascular factors on cognition may be more prominent in later life. Furthermore, the measures of self-reported health and vascular factors were self-reported single-items that are often used in large scale survey studies, although they may not be ideal for capturing specific health conditions that could influence memory.

In MIDUS, we examined accuracy in memory performance in relation to self-ratings by determining whether or not participants scored above the mean for performance in 5-year age groups (40–44, 45–49, 50–54, etc.). However, other neuropsychological research has compared performance using age-, gender- and education-matched scores. Because the self-ratings item in MIDUS asks how participants rated their memory “compared to others their age” (and does not specify education level or gender), we chose to match by age only. Future work should examine whether including education and gender in the comparisons could make a difference for degree of accuracy. The low percentage of variance explained by demographic and health factors in relation to self-ratings in the current study illustrates that the predictors were more strongly related to performance than to subjective assessments. Future work should examine the role of other psychosocial factors, such as sense of control or conscientiousness, in relation to self-ratings in population-based studies. Though these analyses were beyond the scope of the current study, MIDUS includes psychosocial variables and in HRS, a subsample of participants completed psychosocial assessments; thus these data sets are suited to examine these questions in future work. This type of research can help to better understand sources of subjective memory ratings and better characterize adults who over versus under report their memory deficits.

Implications and Future Directions

Given the recommendations for early detection of MCI and dementia (Daviglius et al. 2010), subjective reports of memory abilities and early signs of change remain an important aspect of an overall assessment. In some cases, subtle self-reports of cognitive changes reported by individuals may correspond to early neuropathological changes (Amariglio et al. 2012) not yet detected by cognitive tests. Awareness of memory losses also has clinical utility as it may result in greater use of compensatory strategies and behaviors (Dixon 2000; Hahn and Lachman 2014). This study has added to the previous work that shows that there are inconsistencies in whether memory complaints are associated with cognitive impairment (Mitchell 2008; Roberts et al. 2009) by examining awareness of memory performance and memory change in the general population. Given the ethical considerations associated with identifying individuals in pre-dementia states amidst uncertain prognosis of or treatments for future decline (Whitehouse and Moody 2006) and an overall fear and anxiety of dementia among the aging population (Corner and Bond 2004), a better understanding of accuracy of self-ratings of memory has potential public health implications. Further, especially among middle-aged adults, inaccurate self-ratings of memory, as our data show, may be more reflective of other aspects of mental health rather than actual memory performance. We found evidence that underestimating memory was related to depression, higher neuroticism, and worse physical health, and overestimating memory was related to fewer depressive symptoms, lower neuroticism, and better physical health. Memory concerns may also reflect general stereotypes and expectations about aging-related memory loss. Future work is needed to investigate other factors that are

associated with over or underestimation of memory performance to facilitate meaningful interpretation of self-assessments.

Given efforts to utilize subjective cognitive complaints as part of early risk assessment, in conjunction with cognitive task performance, neuroimaging, and/or biomarkers, results from the current study can help to inform evaluations of memory that include self-reported changes or complaints. A recent CDC (2013) report urges a public health monitoring program to longitudinally track cognitive status. Given that these programs (e.g., BRFS) utilize self-ratings of memory, a careful understanding of the nature and accuracy of self-ratings of memory is needed. A recent study that examined within-person variability in subjective memory, memory performance, and depression in the HRS found that when participants report fewer depression symptoms they also reported above-average subjective memory (Hulur et al. 2014). Our research expanded this work by showing that overestimation of memory abilities is related to fewer depressive symptoms. In future work we plan to build on the current study by examining if accuracy changes over time. We will explore whether people become more or less aware of memory abilities or more likely to over or underestimate their memory abilities as declines become more significant.

A better understanding of self-assessments of memory may facilitate better diagnosis and allow earlier treatment within a system that relies, in part, on family or friends to notice changes or a participant's own assessments of their memory abilities or decline. For those who erroneously report deficits or decline (the "worried well"), there may be underlying psychological problems along with unnecessary costs for visits to memory clinics or doctors. Further examination of subjective memory in conjunction with objective memory performance and change can provide insights into their diagnostic value for early detection of cognitive impairment. Self-assessments may also be useful for deterring unnecessary concerns or costly memory evaluations, especially among middle-aged adults, who may be worried about early signs of dementia when experiencing normal aging-related memory changes.

Acknowledgments This research was supported by funding from the National Institute on Aging (Grants PO1 AG20166 and RO1 AG17920).

Conflicts of Interest The authors declare no conflicts of interest.

References

- Aarts, S., van den Akker, M., Hajema, K. J., van Ingen, A. M., Metsemakers, J. F., Verhey, F. R., & van Boxtel, M. P. (2011). Multimorbidity and its relation to subjective memory complaints in a large general population of older adults. *International Psychogeriatrics*, *23*(4), 616–624. doi:10.1017/S1041610210002024.
- Agrigoroaei, S., & Lachman, M. E. (2011). Cognitive functioning in midlife and old age: combined effects of psychosocial and behavioral factors. *The Journals of Gerontology Series B: Psychological Sciences and Social Sciences*, *66*, 130–140. doi:10.1093/geronb/gbr017.
- Albert, M. S., Jones, K., Savage, C. R., Berkman, L., Seeman, T., Blazer, D., & Rowe, J. W. (1995). Predictors of cognitive change in older persons: MacArthur Studies of Successful Aging. *Psychology and Aging*, *10*, 578–589.
- Albert, M. S., Moss, M. B., Blacker, D., Tanzi, R., & McArdle, J. J. (2007). Longitudinal change in cognitive performance among individuals with mild cognitive impairment. *Neuropsychology*, *21*(2), 158–169. doi:10.1037/0894-4105.21.2.158.

- Albert, M. S., DeKosky, S. T., Dickson, D., Dubois, B., Feldman, H. H., Fox, N. C., & Petersen, R. C. (2011). The diagnosis of mild cognitive impairment due to Alzheimer's disease: recommendations from the National Institute on Aging-Alzheimer's Association workgroups on diagnostic guidelines for Alzheimer's disease. *Alzheimer's & Dementia*, 7(3), 270–279. doi:10.1016/j.jalz.2011.03.008.
- Alzheimer's Association. (2014). 2014 Alzheimer's disease facts and figures. *Alzheimer's & Dementia*, 10(2), e47–e92.
- Amariglio, R. E., Becker, J. A., Carmasin, J., Wadsworth, L. P., Lorus, N., Sullivan, C., & Rentz, D. M. (2012). Subjective cognitive complaints and amyloid burden in cognitively normal older individuals. *Neuropsychologia*, 50(12), 2880–2886. doi:10.1016/j.neuropsychologia.2012.08.011.
- Bäckman, L., Jones, S., Berger, A.-K., Laukka, E. J., & Small, B. J. (2005). Cognitive impairment in preclinical Alzheimer's disease: a meta-analysis. *Neuropsychology*, 19(4), 520–531. doi:10.1037/0894-4105.19.4.520.
- Bandura, A. (1982). Self-efficacy mechanism in human agency. *American Psychologist*, 37(2), 122.
- Bassett, S. S., & Folstein, M. F. (1993). Memory complaint, memory performance, and psychiatric diagnosis: a community study. *Journal of Geriatric Psychiatry and Neurology*, 6(2), 105–111. doi:10.1177/089198879300600207.
- Beaudoin, M., & Desrichard, O. (2011). Are memory self-efficacy and memory performance related? A meta-analysis. *Psychological Bulletin*, 137(2), 211–241. doi:10.1037/a0022106.
- Braak, H., & Braak, E. (1997). Frequency of stages of Alzheimer-related lesions in different age categories. *Neurobiology of Aging*, 18(4), 351–357. doi:10.1016/S0197-4580(97)00056-0.
- Caracciolo, B., Gatz, M., Xu, W., Pedersen, N. L., & Fratiglioni, L. (2012). Differential distribution of subjective and objective cognitive impairment in the population: a nation-wide twin-study. *Journal of Alzheimer's Disease*, 29(2), 393–403. doi:10.3233/JAD-2011-111904.
- Centers for Disease Control and Prevention (CDC). (2013). Self-reported increased confusion or memory loss and associated functional difficulties among adults aged ≥ 60 years. *Morbidity and Mortality Weekly Report*, 62, 347–350.
- Coley, N., Ousset, P., Andrieu, S., Mathieux-Fortunet, H., & Vellas, B. (2008). Memory complaints to the general practitioner: data from the GuidAge study. *The Journal of Nutrition, Health & Aging*, 12(1), S66–S72.
- Comijs, H., Deeg, D., Dik, M., Twisk, J., & Jonker, C. (2002). Memory complaints; the association with psycho-affective and health problems and the role of personality characteristics: a 6-year follow-up study. *Journal of Affective Disorders*, 72(2), 157–165. doi:10.1016/S0165-0327(01)00453-0.
- Corner, L., & Bond, J. (2004). Being at risk of dementia: fears and anxieties of older adults. *Journal of Aging Studies*, 18(2), 143–155. doi:10.1016/j.jaging.2004.01.007.
- Crane, M., Bogner, H., Brown, G., & Gallo, J. (2007). The link between depressive symptoms, negative cognitive bias and memory complaints in older adults. *Aging & Mental Health*, 11(6), 708–715. doi:10.1080/13607860701368497.
- Crimmins, E. M., Kim, J. K., Langa, K. M., & Weir, D. R. (2011). Assessment of cognition using surveys and neuropsychological assessment: the Health and Retirement Study and the Aging, Demographics, and Memory Study. *The Journals of Gerontology Series B: Psychological Sciences and Social Sciences*, 66(suppl 1), i162–i171. doi:10.1093/geronb/gbr048.
- Crumley, J. J., Stetler, C. A., & Horhota, M. (2014). Examining the relationship between subjective and objective memory performance in older adults: a meta-analysis. *Psychology and Aging*, 29(2), 250–263. doi:10.1037/a0035908.
- Daviglus, M. L., Bell, C. C., Berrettini, W., Bowen, P. E., Connolly, E. S., Cox, N. J., Dumbar-Jacob, J. M., Granieri, E. C., Hunt, G., McGarry, K., Patel, D., Potosky, A. L., Sanders-Bush, E., Silberberg, D., & Trevisan, M. (2010). NIH State-of-the-Science Conference Statement: preventing Alzheimer's disease and cognitive decline. *NIH Consensus and State-of-the-Science Statements*, 27(4), 1–30.
- Dixon, R. A. (2000). The concept of metamemory: Cognitive, developmental, and clinical issues. In G. E. Berrios & J. R. Hodges (Eds.), *Memory disorders in psychiatric practice* (pp. 47–57). New York: Cambridge University Press.
- Dubois, B., Feldman, H. H., Jacova, C., DeKosky, S. T., Barberger-Gateau, P., Cummings, J., & Scheltens, P. (2007). Research criteria for the diagnosis of Alzheimer's disease: revising the NINCDS-ADRDA criteria. *The Lancet Neurology*, 6(8), 734–746. doi:10.1016/S1474-4422(07)70178-3.
- Dux, M. C., Woodard, J. L., Calamari, J. E., Messina, M., Arora, S., Chik, H., & Amore, M. (2008). The moderating role of negative affect on objective verbal memory performance and subjective memory complaints in healthy older adults. *Journal of the International Neuropsychological Society*, 14(2), 327–336. doi:10.1017/S1355617708080363.
- Folstein, M. F., Folstein, S. E., & McHugh, P. R. (1975). "Mini-mental state": a practical method for grading the cognitive state of patients for the clinician. *Journal of Psychiatric Research*, 12, 189–198.

- González, H. M., Bowen, M. E., & Fisher, G. G. (2008). Memory decline and depressive symptoms in a nationally representative sample of older adults: the Health and Retirement Study (1998–2004). *Dementia and Geriatric Cognitive Disorders*, 25(3), 266–271. doi:10.1159/000115976.
- Grut, M., Jorm, A. F., Fratiglioni, L., Forsell, Y., Viitanen, M., & Winblad, B. (1993). Memory complaints of elderly people in a population survey: variation according to dementia stage and depression. *Journal of the American Geriatrics Society*, 41(12), 1295–1300.
- Guenther, C. L., & Alicke, M. D. (2010). Deconstructing the better-than-average effect. *Journal of Personality and Social Psychology*, 99(5), 755–770. doi:10.1037/a0020959.
- Hahn, E. A., & Lachman, M. E. (2014). Everyday experiences of memory problems and control: the adaptive role of selective optimization with compensation in the context of memory decline. *Aging, Neuropsychology, and Cognition*. doi:10.1080/13825585.2014.888391. Advance online publication.
- Hall, C. B., Derby, C., LeValley, A., Katz, M. J., Verghese, J., & Lipton, R. B. (2007). Education delays accelerated decline on a memory test in persons who develop dementia. *Neurology*, 69(17), 1657–1664. doi:10.1212/01.wnl.0000278163.82636.30.
- Heeringa, S. G., & Connor, J. H. (1995). *Technical description of the Health and Retirement Survey sample design*. Ann Arbor: University of Michigan.
- Herlitz, A., & Rehnman, J. (2008). Sex differences in episodic memory. *Current Directions in Psychological Science*, 17(1), 52–56. doi:10.1111/j.1467-8721.2008.00547.x.
- Hertzog, C., & Dunlosky, J. (2011). Metacognition in later adulthood: spared monitoring can benefit older adults' self-regulation. *Current Directions in Psychological Science*, 20, 167–173.
- Herzog, A. R., & Wallace, R. B. (1997). Measures of cognitive functioning in the AHEAD study. *Journal of Gerontology: Social Sciences*, 52B(Special Issue), 37–48.
- Hulur, G., Hertzog, C., Pearman, A., Ram, N., & Gerstorf, D. (2014). Longitudinal associations of subjective memory with memory performance and depressive symptoms: between-person and within-person perspectives. *Psychology and Aging*. doi:10.1037/a0037619.
- Jessen, F., Amariglio, R. E., van Boxtel, M., Breteler, M., Ceccaldi, M., Chetelat, G., Dubois, B., Dufouil, C., Ellis, K. A., van der Flier, W. M., Glodzik, L., van Harten, A. C., de Leon, M. J., McHugh, P., Mielke, M. M., Molinuevo, J. L., Mosconi, L., Osorio, R. S., Perrotin, A., Petersen, R. C., Rabin, L. A., Rami, L., Reisberg, B., Rentz, D. M., Sachdev, P. S., de la Sayette, V., Saykin, A. J., Scheltens, P., Shulman, M. B., Slavin, M. J., Sperling, R. A., Stewart, R., Uspenskaya, O., Vellas, B., Visser, P. J., Wagner, M., & Subjective Cognitive Decline Initiative (SCD-I) Working Group. (2014). A conceptual framework for research on subjective cognitive decline in preclinical Alzheimer's disease. *Alzheimer's & Dementia*. doi:10.1016/j.jalz.2014.01.001.
- Jonker, C., Smits, C. H. M., & Deeg, D. J. H. (1997). Affect-related metamemory and memory performance in a population-based sample of older adults. *Educational Gerontology*, 23, 115–128.
- Jorm, A., Christensen, H., Korten, A., Henderson, A., Jacomb, P., & Mackinnon, A. (1997). Do cognitive complaints either predict future cognitive decline or reflect past cognitive decline? A longitudinal study of an elderly community sample. *Psychological Medicine*, 27(1), 91–98.
- Juster, F. T., & Suzman, R. (1995). An overview of the health and retirement study. *Journal of Human Resources*, 30, S7–S56.
- Karlamangla, A. S., Miller-Martinez, D., Aneshensel, C. S., Seeman, T. E., Wight, R. G., & Chodosh, J. (2009). Trajectories of cognitive function in late life in the United States: demographic and socioeconomic predictors. *American Journal of Epidemiology*, 170(3), 331–342. doi:10.1093/aje/kwp154.
- Kohout, F. J., Berkman, L. F., Evans, D. A., & Cornoni-Huntley, J. (1993). Two shorter forms of the CES-D depression symptoms index. *Journal of Aging and Health*, 5(2), 179–193.
- Kruger, J., & Dunning, D. (1999). Unskilled and unaware of it: how difficulties in recognizing one's own incompetence lead to inflated self-assessments. *Journal of Personality and Social Psychology*, 77, 1121–1134.
- Kryscio, R. J., Abner, E. L., Cooper, G. E., Fardo, D. W., Jicha, G. A., Nelson, P. T., & Schmitt, F. A. (2014). Self-reported memory complaints: implications from a longitudinal cohort with autopsies. *Neurology*, 83(15), 1359–1365. doi:10.1212/WNL.0000000000000856.
- Lachman, M. E. (2004). Development in midlife. *Annual Review of Psychology*, 55, 305–331.
- Lachman, M. E., & Tun, P. A. (2008). Cognitive testing in large-scale surveys: Assessment by telephone. In S. Hofer & D. Alwin (Eds.), *Handbook on cognitive aging: Interdisciplinary perspectives* (pp. 506–523). Thousand Oaks, Ca: Sage Publishers.
- Lachman, M. E., & Weaver, S. L. (1997). *The Midlife Development Inventory (MIDI) personality scales: Scale construction and scoring*. Waltham, MA: Brandeis University.
- Lachman, M. E., Agrigoroaei, S., Tun, P. A., & Weaver, S. L. (2014). Monitoring cognitive functioning: psychometric properties of the brief test of adult cognition by telephone. *Assessment*, 21, 404–417. doi:10.1177/1073191113508807.

- Langa, K. M., Plassman, B. L., Wallace, R. B., Herzog, A. R., Heeringa, S. G., Ofstedal, M. B., & Hurd, M. D. (2005). The aging, demographics, and memory study: study design and methods. *Neuroepidemiology*, 25(4), 181–191.
- Langa, K. M., Llewellyn, D. J., Lang, I. A., Weir, D. R., Wallace, R. B., Kabeto, M. U., & Huppert, F. A. (2009). Cognitive health among older adults in the United States and in England. *BMC Geriatrics*, 9(1), 23. doi:10.1186/1471-2318-9-23.
- Lee, P.-L. (2014). The relationship between memory complaints, activity and perceived health status. *Health and Disability*, 55, 136–141. doi:10.1111/sjop.12107.
- Lee, P.-L., Hsiao, C.-H., & Wang, C.-L. (2013). Physical activity and memory complaints in middle-age Americans: results from the MIDUS study. *American Journal of Alzheimer's Disease and Other Dementias*, 28(6), 600–605. doi:10.1177/1533317513494744.
- McArdle, J. J., Fisher, G. G., & Kadlec, K. M. (2007). Latent variable analyses of age trends of cognition in the Health and Retirement Study, 1992–2004. *Psychology and Aging*, 22(3), 525–545. doi:10.1037/0882-7974.22.3.525.
- Merema, M. R., Speelman, C. P., Foster, J. K., & Kaczmarek, E. A. (2012). Neuroticism (not depressive symptoms) predicts memory complaints in some community-dwelling older adults. *The American Journal of Geriatric Psychiatry*, 21(8), 729–736. doi:10.1097/JGP.0b013e31826d6973.
- Mewton, L., Sachdev, P., Anderson, T., Sunderland, M., & Andrews, G. (2013). Demographic, clinical, and lifestyle correlates of subjective memory complaints in the Australian population. *The American Journal of Geriatric Psychiatry*. doi:10.1016/j.jagp.2013.04.004.
- Mitchell, A. J. (2008). The clinical significance of subjective memory complaints in the diagnosis of mild cognitive impairment and dementia: a meta-analysis. *International Journal of Geriatric Psychiatry*, 23(11), 1191–1202. doi:10.1002/gps.2053.
- Mitchell, A. J., Beaumont, H., Ferguson, D., Yadegarfar, M., & Stubbs, B. (2014). Risk of dementia and mild cognitive impairment in older people with subjective memory complaints: meta-analysis. *Acta Psychiatrica Scandinavica*. doi:10.1111/acps.12336.
- Mol, M., Carpay, M., Ramakers, I., Rozendaal, N., Verhey, F., & Jolles, J. (2007). The effect of perceived forgetfulness on quality of life in older adults; a qualitative review. *International Journal of Geriatric Psychiatry*, 22(5), 393–400. doi:10.1002/gps.1686.
- Mol, M., van Boxtel, M. P., Willems, D., Verhey, F. R., & Jolles, J. (2009). Subjective forgetfulness is associated with lower quality of life in middle-aged and young-old individuals: a 9-year follow-up in older participants from the Maastricht Aging Study. *Aging & Mental Health*, 13(5), 699–705. doi:10.1080/13607860902845541.
- Nasreddine, Z. S., Phillips, N. A., Bédirian, V., Charbonneau, S., Whitehead, V., Collin, I., & Chertkow, H. (2005). The Montreal Cognitive Assessment, MoCA: a brief screening tool for mild cognitive impairment. *Journal of the American Geriatrics Society*, 53(4), 695–699. doi:10.1111/j.1532-5415.2005.53221.x.
- Ofstedal, M. B., Zimmer, Z. S., & Lin, H.-S. (1999). A comparison of correlates of cognitive functioning in older persons in Taiwan and the United States. *The Journals of Gerontology Series B: Psychological Sciences and Social Sciences*, 54(5), S291–S301. doi:10.1093/geronb/54B.5.S291.
- Ofstedal, M. B., Fisher, G. G., & Hertzog, A. R. (2005). *Documentation of cognitive functioning measures in the Health and Retirement Study*. Ann Arbor, MI: University of Michigan.
- Petersen, R. C. (2004). Mild cognitive impairment as a diagnostic entity. *Journal of Internal Medicine*, 256(3), 183–194. doi:10.1111/j.1365-2796.2004.01388.x.
- Plassman, B. L., Langa, K. M., Fisher, G. G., Heeringa, S. G., Weir, D. R., Ofstedal, M. B., & Rodgers, W. L. (2008). Prevalence of cognitive impairment without dementia in the United States. *Annals of Internal Medicine*, 148(6), 427–434. doi:10.7326/0003-4819-148-6-200803180-00005.
- Plassman, B. L., Langa, K. M., McCammon, R. J., Fisher, G. G., Potter, G. G., Burke, J. R., & Unverzagt, F. W. (2011). Incidence of dementia and cognitive impairment, not dementia in the United States. *Annals of Neurology*, 70(3), 418–426. doi:10.1002/ana.22362.
- Podewils, L. J., McLay, R. N., Rebok, G. W., & Lyketsos, C. G. (2003). Relationship of self-perceptions of memory and worry to objective measures of memory and cognition in the general population. *Psychosomatics*, 44(6), 461–470. doi:10.1176/appi.psy.44.6.461.
- Radler, B. T., & Ryff, C. D. (2010). Who participates? Accounting for longitudinal retention in the MIDUS national study of health and well-being. *Journal of Aging and Health*, 22, 307–331. doi:10.1177/0898264309358617.
- Radloff, L. S. (1977). The Ces-D scale. *Applied Psychological Measurement*, 1(3), 385.
- Reid, L. M., & Maclullich, A. M. (2006). Subjective memory complaints and cognitive impairment in older people. *Dementia and Geriatric Cognitive Disorders*, 22(5–6), 471–485. doi:10.1159/000096295.
- Rey, A. (1964). *L'examen clinique en psychologie*. Paris: Presses Universitaires De France.

- Roberts, J., Clare, L., & Woods, R. (2009). Subjective memory complaints and awareness of memory functioning in mild cognitive impairment: a systematic review. *Dementia and Geriatric Cognitive Disorders*, 28(2), 95–109. doi:10.1159/000234911.
- Roth, M., Tym, E., Mountjoy, C., Huppert, F. A., Hendrie, H., Verma, S., & Goddard, R. (1986). CAMDEX. A standardised instrument for the diagnosis of mental disorder in the elderly with special reference to the early detection of dementia. *The British Journal of Psychiatry*, 149(6), 698–709.
- Rouch, I., Anterion, C. T., Dauphinot, V., Kerleroux, J., Roche, F., Barthelemy, J. C., & Laurent, B. (2008). Cognitive complaints, neuropsychological performance and affective disorders in elderly community residents. *Disability and Rehabilitation*, 30(23), 1794–1802. doi:10.1080/09638280701667825.
- Salthouse, T. (2009). *Major issues in cognitive aging*. New York: Oxford University Press.
- Seidenberg, M., Taylor, M. A., & Haitiner, A. (1994). Personality and self-report of cognitive functioning. *Archives of Clinical Neuropsychology*, 9(4), 353–361.
- Singh-Manoux, A., Kivimaki, M., Glymour, M. M., Elbaz, A., Berr, C., Ebmeier, K. P., & Dugravot, A. (2012). Timing of onset of cognitive decline: results from Whitehall II prospective cohort study. *British Medical Journal*, 344, d7622. doi:10.1136/Bmj.D7622.
- Slavin, M. J., Brodaty, H., Kochan, N. A., Crawford, J. D., Trollor, J. N., Draper, B., & Sachdev, P. S. (2010). Prevalence and predictors of “subjective cognitive complaints” in the Sydney Memory and Ageing Study. *The American Journal of Geriatric Psychiatry*, 18(8), 701–710. doi:10.1097/JGP.0b013e3181df49fb.
- Small, B. J., Dixon, R. A., & McArdle, J. J. (2011). Tracking cognition–health changes from 55 to 95 years of age. *The Journals of Gerontology Series B: Psychological Sciences and Social Sciences*, 66(suppl 1), i153–i161. doi:10.1093/geronb/gbq093.
- Snitz, B. E., Morrow, L. A., Rodriguez, E. G., Huber, K. A., & Saxton, J. A. (2008). Subjective memory complaints and concurrent memory performance in older patients of primary care providers. *Journal of the International Neuropsychological Society*, 14(6), 1004–1013. doi:10.1017/S1355617708081332.
- StataCorp. (2009). *Stata statistical software (Version 11)*. College Station, TX: StataCorp LP.
- Steffick, D. E. (2000). *Documentation of affective functioning measures in the Health and Retirement Study*. Ann Arbor: HRS Health Working Group.
- Tun, P. A., & Lachman, M. E. (2008). Age differences in reaction time and attention in a national telephone sample of adults: education, sex, and task complexity matter. *Developmental Psychology*, 44, 1421–1429.
- Turvey, C. L., Schultz, S., Arndt, S., Wallace, R. B., & Herzog, R. (2000). Memory complaint in a community sample aged 70 and older. *Journal of the American Geriatrics Society*, 48(11), 1435–1441.
- van Harten, A. C., Smits, L. L., Teunissen, C. E., Visser, P. J., Koene, T., Blankenstein, M. A., & van der Flier, W. M. (2013). Preclinical AD predicts decline in memory and executive functions in subjective complaints. *Neurology*, 81(16), 1409–1416.
- van Oijen, M., de Jong, F. J., Hofman, A., Koudstaal, P. J., & Breteler, M. M. B. (2007). Subjective memory complaints, education, and risk of Alzheimer’s disease. *Alzheimer’s & Dementia*, 3(2), 92–97. doi:10.1016/j.jalz.2007.01.011.
- Waldorff, F. B., Rishoj, S., & Waldemar, G. (2008). If you don’t ask (about memory), they probably won’t tell. *Journal of Family Practice*, 57(1), 41–44.
- Wang, P. S., Berglund, P., & Kessler, R. C. (2000). Recent care of common mental disorders in the United States. *Journal of General Internal Medicine*, 15(5), 284–292.
- Ware, J. E., Jr., & Sherbourne, C. D. (1992). The MOS 36-item short-form health survey (SF-36). I. Conceptual framework and item selection. *Medical Care*, 30(6), 473–483.
- Whitehouse, P. J., & Moody, H. R. (2006). Mild cognitive impairment: a ‘hardening of the categories’? *Dementia*, 5(1), 11–25. doi:10.1177/1471301206059752.
- Zandi, T. (2004). Relationship between subjective memory complaints, objective memory performance, and depression among older adults. *American Journal of Alzheimer’s Disease and Other Dementias*, 19(6), 353–360. doi:10.1177/153331750401900610.
- Zelinski, E. M., Burnight, K. P., & Lane, C. J. (2001). The relationship between subjective and objective memory in the oldest old: comparisons of findings from a representative and a convenience sample. *Journal of Aging and Health*, 13, 248–266.